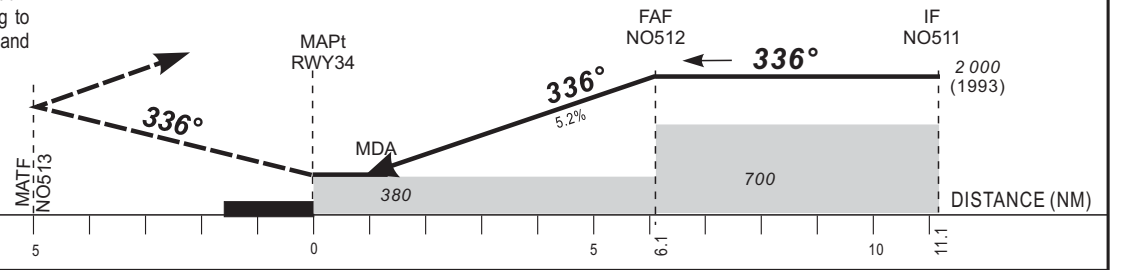


Distance to THR34 (NM)	FAF	5	4	3	2	1
Altitude (ft)	2 000	1 660	1 340	1 020	700	380

MISSED APPROACH: Climb MAG 336°. At NO513 turn left to NO514 climbing to 2000 FT then proceed to NO516 and NO517 then direct to TUVAT.

Or follow ATC instructions.



CAT	LNAV				(*)CIRCLING				RVR for take-off CAT A - B - C : 400 CAT D : 400
	OCA (OCH)	MDA MDH	RVR(1)	RVR(2)	OCA (OCH)	MDA MDH	VIS		
A	378 (371)	380 (380)	900	1500	450 (441)	460 (450)	1500		
B	378 (371)	380 (380)	1000	1500	512 (503)	520 (510)	1600		
C	378 (371)	380 (380)	1000	1800	611 (602)	620 (610)	2400		
D	378 (371)	380 (380)	1400	2000	611 (602)	710 (700)	3600		

Notes : (1) With approach light - (2) Without approach light - (*) Daytime only

Timing FAF/THR					
KT	MIN	SEC	KT	MIN	SEC
90	4	Min 04	140	2	Min 37
100	3	Min 40	150	2	Min 26
110	3	Min 20	160	2	Min 17
120	3	Min 03	170	2	Min 09
130	2	Min 49	180	2	Min 02

AMDT 12/18 NORMALIZATION